



24 Warwick Street Rugby



Cadman Homes
Residential Sales, Lettings & Property Management

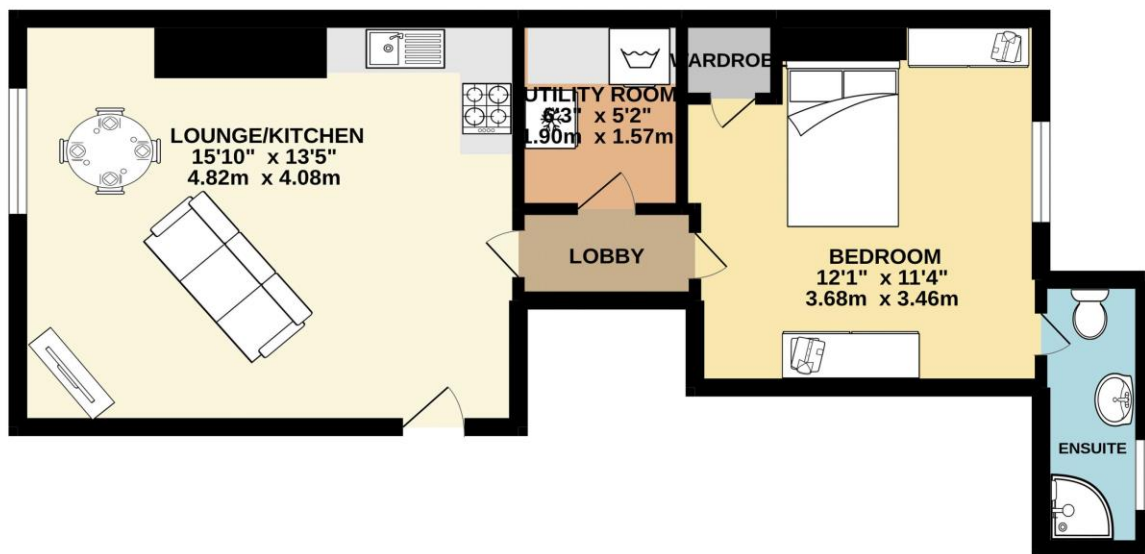
A ground floor one bedroom apartment situated on the edge of Rugby town centre. The accommodation comprises; Open plan living, fitted kitchen with appliances, shower room, spacious double bedroom with a built-in wardrobe. The apartment further benefits from a communal garden/yard and non allocated off road parking. Currently rented for £565 PCM, this property is sold with the tenant in situ. Investors only



ACCOMMODATION

- Ground Floor
- Separate Utility Room
- EPC Rating - D
- Investors Only
- Tenant in situ paying £565 PCM
- One Bedroom Apartment
- Open Plan Lounge/Kitchen
- Double Bedroom with en-suite
- Period Features
- Share of Freehold - Service Charge £85 PCM - 117 years remaining on lease

GROUND FLOOR



Whilst every attempt has been made to ensure the accuracy of the floorplan contained here, measurements of doors, windows, rooms and any other items are approximate and no responsibility is taken for any error, omission or mis-statement. This plan is for illustrative purposes only and should be used as such by any prospective purchaser. The services, systems and appliances shown have not been tested and no guarantee as to their operability or efficiency can be given.
Made with Metropix ©2022



6 Albert Street, Rugby CV21 2RS Tel: 01788 560 905
rugby@cadmanhomes.co.uk www.cadmanhomes.co.uk

MONEY LAUNDERING REGULATIONS: Intending purchasers will be asked to produce identification documentation at a later stage and we would ask for your co-operation in order that there will be no delay in agreeing the sale. 2. General: While we endeavour to make our sales particulars fair, accurate and reliable, they are only a general guide to the property and, accordingly, if there is any point which is of particular importance to you, please contact the office and we will be pleased to check the position for you, especially if you are contemplating traveling some distance to view the property. 3. Measurements: These approximate room sizes are only intended as general guidance. You must verify the dimensions carefully before ordering carpets or any built-in furniture. 4. Services: Please note we have not tested the services or any of the equipment or appliances in this property, accordingly we strongly advise prospective buyers to commission their own survey or service reports before finalising their offer to purchase.