



Cadman Homes
Residential Sales, Lettings & Property Management

Bromwich Road

Hillmorton

Offers in excess of
£190,000



This two bedroom end terrace property offers a lounge which is semi-open plan to a modern kitchen/diner with a large island and space for a dining table. There is also a conservatory and a private rear garden. Upstairs there are two double bedrooms and a stylish bathroom. With gas central heating and PVCu double glazing. Set in the popular Hillmorton area

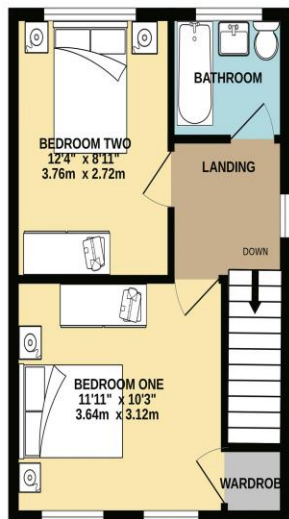
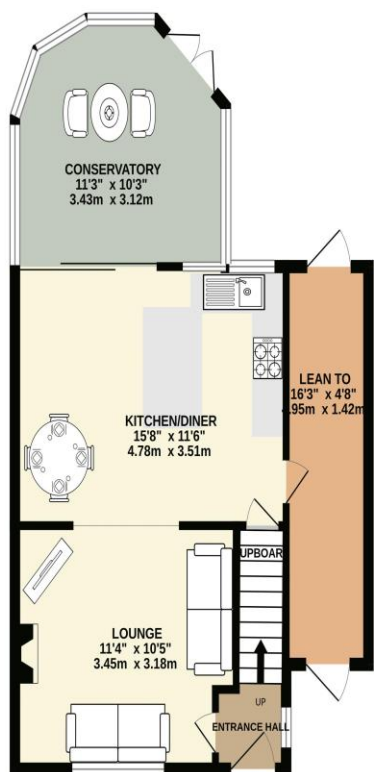
ACCOMMODATION

- Two Double Bedrooms
- Lounge and semi-open kitchen/diner with island
- Light and bright throughout
- Modern fitted Kitchen
- Conservatory
- Driveway to Front
- Stylish Bathroom
- Garden With Seating Area
- EPC - D Council Tax - B
- Gas central heating and PVCu double glazing



GROUND FLOOR

1ST FLOOR



Whilst every attempt has been made to ensure the accuracy of the floorplan contained here, measurements of doors, windows, rooms and any other items are approximate and no responsibility is taken for any error, omission or mis-statement. This plan is for illustrative purposes only and should be used as such by any prospective purchaser. The services, systems and appliances shown have not been tested and no guarantee as to their operability or efficiency can be given.
Made with Metropix ©2023

6 Albert Street, Rugby CV21 2RS Tel: 01788 560 905 rugby@cadmanhomes.co.uk www.cadmanhomes.co.uk

MONEY LAUNDERING REGULATIONS: Intending purchasers will be asked to produce identification documentation at a later stage and we would ask for your co-operation in order that there will be no delay in agreeing the sale. 2. General: While we endeavour to make our sales particulars fair, accurate and reliable, they are only a general guide to the property and, accordingly, if there is any point which is of particular importance to you, please contact the office and we will be pleased to check the position for you, especially if you are contemplating traveling some distance to view the property. 3. Measurements: These approximate room sizes are only intended as general guidance. You must verify the dimensions carefully before ordering carpets or any built-in furniture. 4. Services: Please note we have not tested the services or any of the equipment or appliances in this property, accordingly we strongly advise prospective buyers to commission their own survey or service reports before finalising their offer to purchase.