



Cadman Homes
Residential Sales, Lettings & Property Management

Old Works Court

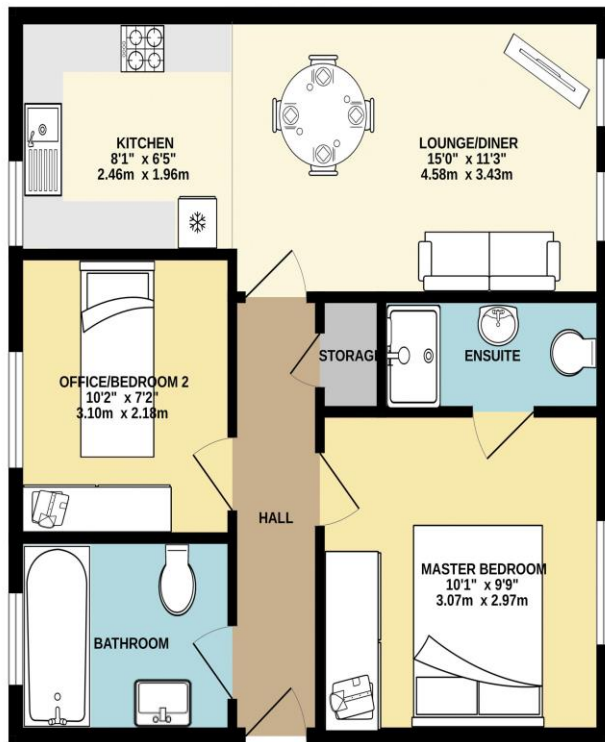
Rugby

£120,000



A ground floor apartment situated just a short walk from Rugby town centre. With a 15' living room, two bedrooms, one with en-suite, gas central heating and designated off road parking. The apartments are popular with first time buyers and investors, other apartments in the block are achieving circa £750 PCM. The service charge is only £50 PCM and the ground rent is £150 PA. Sold with no onward chain.

GROUND FLOOR



Whilst every attempt has been made to ensure the accuracy of the floorplan contained herein, measurements of doors, windows, rooms and any other items are approximate and no responsibility is taken for any error, omission or mis-statement. This plan is for illustrative purposes only and should be used as such by any prospective purchaser. The services, systems and appliances shown have not been tested and no guarantee as to their operability or efficiency can be given.
Made with floorplan3D

ACCOMMODATION

- Two Bedrooms
- 15' Lounge/Diner
- Kitchen With Fitted Appliances
- Designated Off Road Parking
- Gas Central Heating
- PVCu Double Glazing
- No Chain
- Close to Town Centre
- Service Charges £50 per month - Ground Rent £150 PA - Lease 120 Years from 2009
- EPC RATING - C



6 Albert Street, Rugby CV21 2RS Tel: 01788 560 905 rugby@cadmanhomes.co.uk www.cadmanhomes.co.uk

MONEY LAUNDERING REGULATIONS: Intending purchasers will be asked to produce identification documentation at a later stage and we would ask for your co-operation in order that there will be no delay in agreeing the sale. 2. General: While we endeavour to make our sales particulars fair, accurate and reliable, they are only a general guide to the property and, accordingly, if there is any point which is of particular importance to you, please contact the office and we will be pleased to check the position for you, especially if you are contemplating traveling some distance to view the property. 3. Measurements: These approximate room sizes are only intended as general guidance. You must verify the dimensions carefully before ordering carpets or any built-in furniture. 4. Services: Please note we have not tested the services or any of the equipment or appliances in this property, accordingly we strongly advise prospective buyers to commission their own survey or service reports before finalising their offer to purchase.