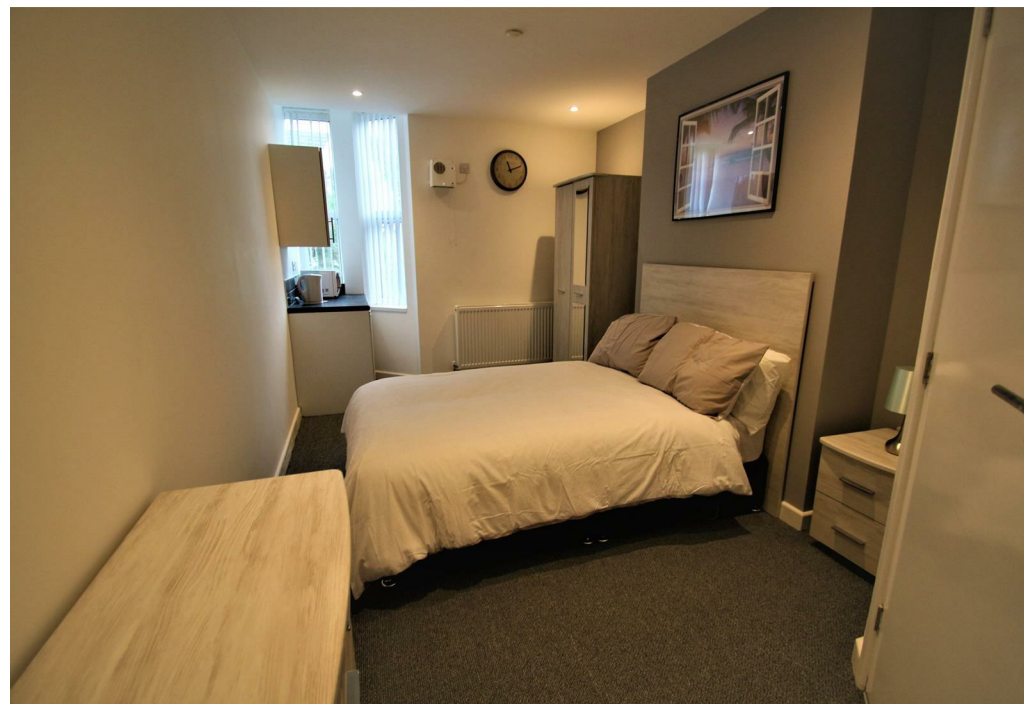


Room 6 13 Murray Road  
Rugby  
Warwickshire  
CV21 3JN



Room 6 13 Murray Road

£520 PCM




Local Authority

Council Tax Band

Exempt

EPC Rating

Directions

Energy Efficiency Rating		
	Current	Potential
<i>Very energy efficient - lower running costs</i>		
(92 plus) <b>A</b>		
(81-91) <b>B</b>		
(69-80) <b>C</b>		
(55-68) <b>D</b>		
(39-54) <b>E</b>		
(21-38) <b>F</b>		
(1-20) <b>G</b>		
<i>Not energy efficient - higher running costs</i>		
<b>England &amp; Wales</b>	EU Directive 2002/91/EC	



**Agents Note:** Whilst every care has been taken to prepare these particulars, they are for guidance purposes only. All measurements are approximate and are for general guidance purposes only and whilst every care has been taken to ensure their accuracy, they should not be relied upon and potential buyers/tenants are advised to recheck the measurements



**Cadman Homes**  
24 Railway Terrace  
Rugby  
Warwickshire  
CV21 3LJ

**Contact**

01788560905

[info@cadmanhomes.co.uk](mailto:info@cadmanhomes.co.uk)

[www.cadmanhomes.co.uk](http://www.cadmanhomes.co.uk)



**Cadman Homes**

Family Owned, Family Run, Family Values